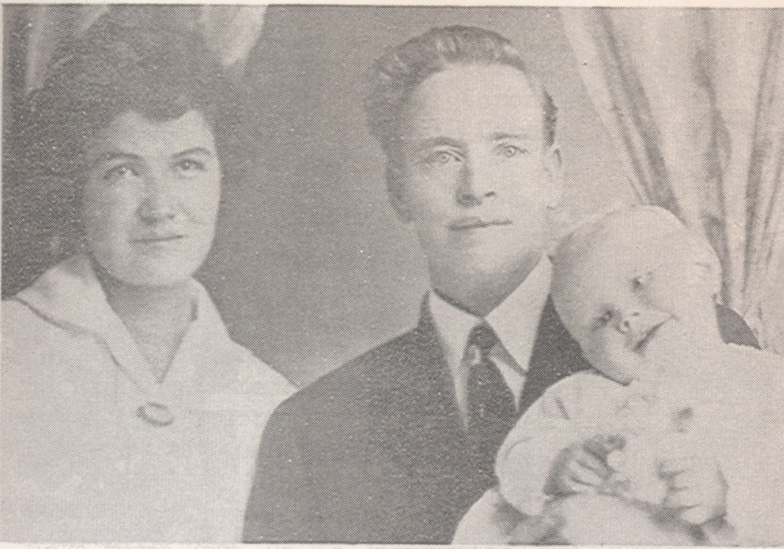
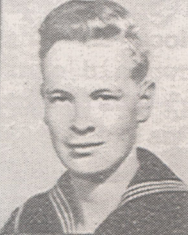
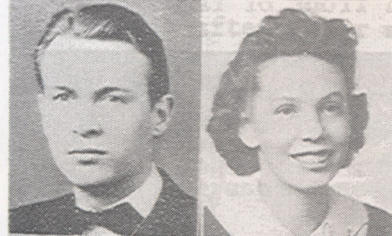
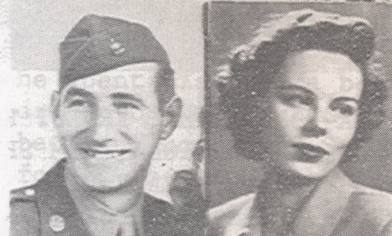


THE ERNEST FOUNTAIN LANGFORD AND ZINA CHARLOTTE CHLARSON FAMILY



Above: ERNEST F., CHARLOTTE AND IRMA (1916)



Above Rear, L-R: Iola and Iona (twins), Irma. Front, L-R: Ernest F., Charlotte holding James Harvey, Ida-Rose. (Spring, 1927)

Left 2 columns, Read L-R: 1. Irving W. Wilcox, Irma. 2. Iona. 3. Thomas W. Spencer, Iola. 4. H. Tracy Hall, Ida-Rose. 5. Joan Tullis, Ernest F. 6. Melba Brewer, James H. 7. Elvira Wilde, Heber O. (Members of family are on the Right, Spouses opposite on Left.)

But I wouldn't take the prizes, because I felt that I was more experienced and older than the rest of the students. That's what I told Miss Maughn who was from Logan, and who was my teacher.

I left the prizes and a month later I was in the hospital. My father, Ernest Fountain Langford, was in the hospital with me.

As I was in the hospital, I was told that I was a good student in school. I was told that I was a good student in school. I was told that I was a good student in school.

I left early to go to school. I was told that I was a good student in school. I was told that I was a good student in school.

And that's another story. I was told that I was a good student in school. I was told that I was a good student in school. I was told that I was a good student in school.

Mother said that I was a good student in school. I was told that I was a good student in school. I was told that I was a good student in school.

I finished typing the letter. I was told that I was a good student in school. I was told that I was a good student in school.

In seventeen years in Mexico, I was told that I was a good student in school. I was told that I was a good student in school.

COMPILED BY IDA-ROSE L. HALL